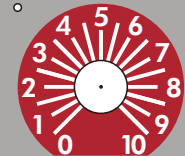


BERGFOTRON

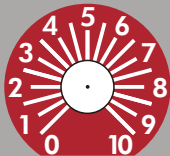
amore



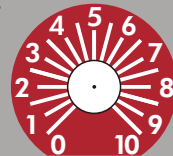
audio/LF



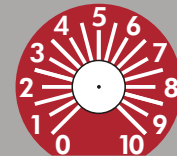
VCO frequency



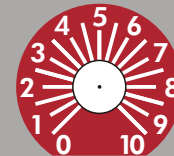
VCO FM



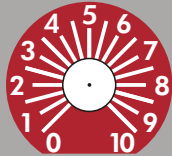
VCO PW



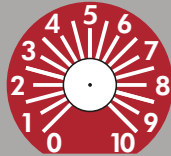
VCO PWM



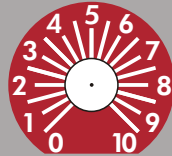
LFO frequency



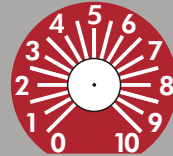
parameter 1



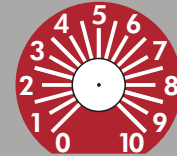
parameter 2



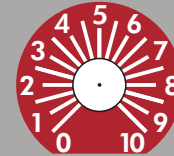
parameter 3



parameter 4



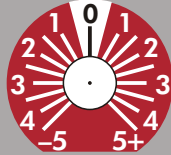
parameter 5



parameter 6



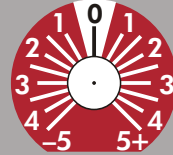
modulation 1



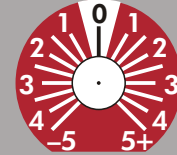
modulation 2



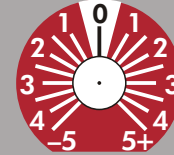
modulation 3



modulation 4



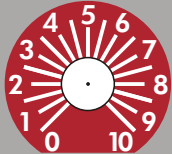
modulation 5



modulation 6



gate



input 1



DC
AC
OD



input 2



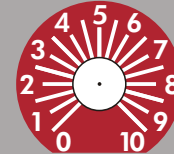
DC
AC
OD



switch 1



switch 2



out level



CV



monitor source

output 1

output 2

aux output

ext input